

> SCW100

GRAPE MUST SPECTROCOLORIMETER



The Spectrocolorimeter SC100w was designed by Relco Instruments after years of research and development in the field of colorimetric measurements applied to the winery world.

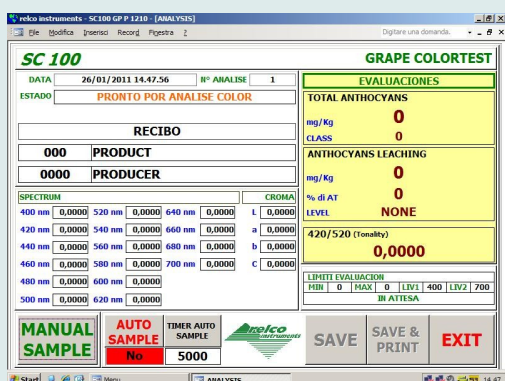
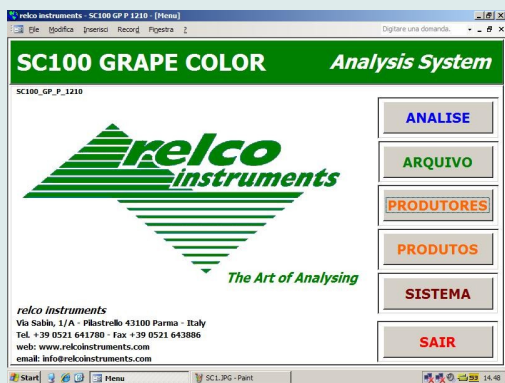
The search for a reliable and, at the same time, convenient instrument to use in laboratory and in field for monitoring colorimetric changes, **Anthocyanins content, anthocyanins leaching, Tonality Index, the coordinates trichromatic, the spectrum of remission, the absorbance as a function of wavelength**, is absorbed into production of SC100w.

Based on a Spectrocolorimeter reflectance with geometry $45^\circ/0^\circ$ is capable, through its powerful built-in computer μ ITX, to draw up the parameters listed, manage a database analysis, producing a statistical, connect to an Ethernet network, provide a mapping of vineyards area depending on set parameters.

The methodology used is simple: provide the blending of grape sample using our preparation system, pour the obtained sample in the cell, almost instantaneous reading of the analysis parameters.



The art of analysing



PROCESSING OF :

- ANTHOCYANINS CONTENT

From 0 to 3000 mg/Kg
Accuracy : +/- 7%

- ANTHOCYANINS LEACHING

From 0 to 100% of anthocyanins content.
Value in mg/Kg
Three classes customized : LOW-MEDIUM-HIGH
Accuracy ; +/- 20%

- TONALITY INDEX

Parameter related to the health status of the grape.

From 0 to 1
Ability to use a threshold to see the limits exceeded.

- COLORIMETRIC INDEX

L,a,b,C, | X,Y,Z

- SPECTRAL REMISSION - ABSORBANCE CURVE

- DATA PROCESSING



Via Sabin 1/A
43123 Pilastrello - Parma - ITALY
Tel. +39 0521 641780
Fax +39 0521 643886
info@reikoinstrument.com
www.reikoinstrument.com



Technical Specifications

Working range	400...700 nm
Geometry	45°/0° (illumination 45° - Measurement 0°)
Accuracy	0,2 dE* to calib. Standard
Resolution	1 nm
Weight	8 Kg.
Dimensions	42x35x38(h) cm
Display	10,4" touch-screen LCD 800x600 px
Calibration	White Standard
Measuring	Reflectance - optical-fiber
Ref. Parameters	HunterLab (L-a-b) Tristimulus (X-Y-Z) Spectral remission Absorbance curve Reflectance
Measuring time	5"
Light source	Krypton lamp with filter
Box	AISI 304 Stainless steel IP50 protection
Software	Easy and quick to handle, manages all the algorithms for data processing and for system configuration.
Language	Italian, English, Spanish, French
Power supply	220 VAC - 50...60 Hz. 100VA
Operating temperature	10...40 °C
Product temperature	10...50 °C
OS	Windows XPPro®
Cell capacity	120ml
Minimum product's quantity	about 500gr. of grapes
Sample	The instrument is capable of measurements in a grape must liquid (>250 FTU) provided by our WT samplers or by specific cutter
Materials in contact with product	PVC and tempered optical glass
Internal dehumidification	Silica gel bag
Outputs	RS232 - RS485 Ethernet port RJ45 USB port (2) PS2 for external mouse/keyboard

• Research laboratories

• Food industries laboratories

• Oenologicals laboratories